

The Business of Furniture | May 29, 2019

BoF



Ginny + new Ginny Bariatric
BoF: Best of Friends

NeoCon space 7-5072



BoF

The Business of Furniture

May 29, 2019

HIGHLIGHTS

18 UPFRONT: ASID + DIFFA Join Forces on Design Impacts Life Fund

The American Society of Interior Designers (ASID) has donated \$375,000 to Design Industries Foundation Fighting AIDS (DIFFA) to create the new Design Impacts Life Fund.

23 Are Cubicles Coming Back? Design Trends from CDW in London

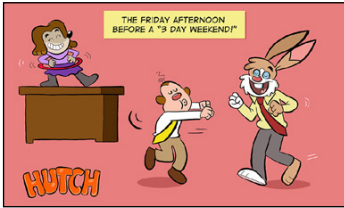
Privacy continues to be addressed by furniture makers around the world, and the onslaught of pods continues, some with smartly designed twists.

28 ASID Releases 1st Quarter Interior Design Billings Index Report

The six month outlook shows stronger business conditions are expected.

< Clerkenwell Design Week took place last week.





15 | Hutch Industry Cartoon



18 | Uprfront



19 | The Stream

COLUMNS
Stephen Says 34

FINANCIAL
Industry Shares/Graphs 32

CALENDAR & MORE
Regional Industry News 30
Upcoming Events 36
Marketplace & Classifieds 58



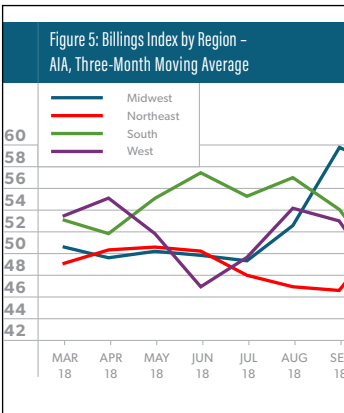
20 | NeoCon Extends Outdoors: Unveils Experiential Outdoor Environment, The NeoCon Plaza

Designed by Gensler Chicago and brought to life in collaboration with Forward Fruit Branded Environments.



23 | Are Cubicles Coming Back? Design Trends from CDW in London

Privacy continues to be addressed by furniture makers around the world, and the onslaught of pods continues, some with smartly designed twists.



28 | ASID Releases 1st Quarter Interior Design Billings Index Report

Survey results showed interior design firms ended the first quarter on a level not seen in the previous 12 months.



40 | Versati Debuts as Best Portable Bars' Newest Product

The bars are ideal for any place that hosts big or small events and need the aesthetics of a fresh, sleek, professional looking bar.



38 PLACES Alternative technology client, Silicon Valley, California



44 FIRST LOOKS The latest product introductions.



46 PULSE The latest industry happenings.



The Business of Furniture



Editor-in-Chief, Bellow Press Rob Kirkbride

Vice President, Sales & Marketing, Publisher, Bellow Press Melissa Skolnick

Vice President, Content Production, Bellow Press Todd Hardy

Staff Writer, Bellow Press Emily Clingman

Workplace Guru, BoF Stephen Viscusi

Training & Development Columnist, BoF Sid Meadows

Contributing Writers, BoF:

Shannon Bloch, Bruce Buursma, John Q. Horn, Stef Schwalb,

Jennie Morton, Michael Dunlap, Carolyn Cirillo

Illustrator, BoF Jamie Cosley

Copy Editor, BoF Linda Odette

Publishing Headquarters

382 NE 191st St, Suite 253

Miami, Florida 33179

877-BELLOW9 (877-235-5699)

Email: info@bellow.press

Include us on your PR distribution list.

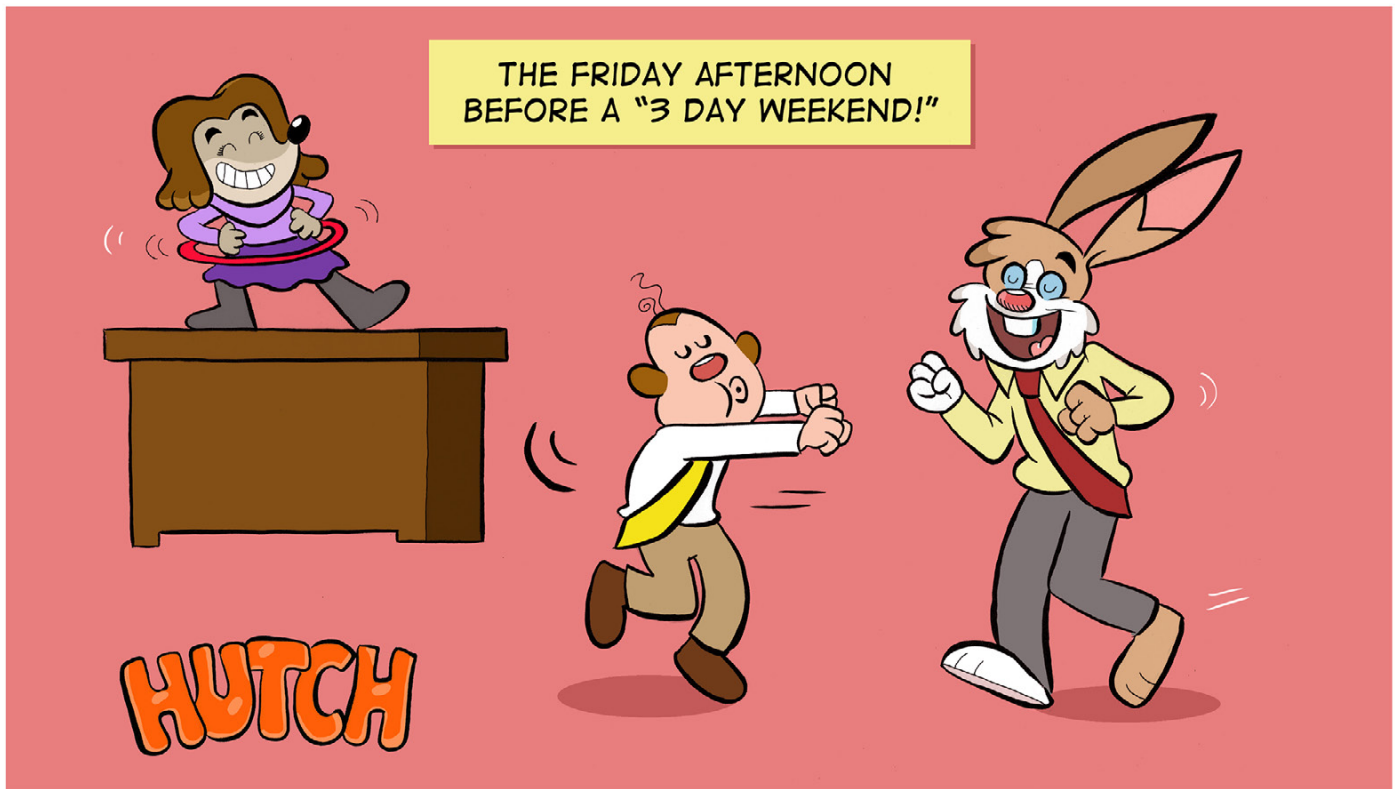
Send To: news@bellow.press

Please include high resolution photos along with your release; at least 300 dpi.

https://bellow.press/SubmitNews

Business of Furniture and *Workplaces* magazine are the go-to sources for keeping you informed about everything that is happening in the industry. From trends that affect your bottom line, to new products that will help your customers work better, to stories that will help you run a better, more informed company.

ROB KIRKBRIDE, EDITOR-IN-CHIEF



Contents Copyright ©2019 Bellow Press Inc.

WORKSTATIONS

BDI's New Sigma Office Brings Adaptable Style to Any Workspace

➤ Designed for flexibility, practicality and style in the modern office space, BDI's new Sigma Office collection offers a fresh approach to modular work surfaces and storage.



Sigma Office boasts a variety of desks and storage/filing options for spaces that require flexible solutions. The complete collection includes a full-size and compact desk, a mobile file pedestal, a lateral file cabinet and a multifunction cabinet. An optional desk return coordinates with the full-size desk and helps extend the work surface or provide cross-desk collaboration.

Beyond its flexibility, Sigma's materials set the collection apart. All work surfaces and desktops boast BDI's satin-etched glass surface that is smooth to the touch and resistant to fingerprints and scratches. It also features thermally fused laminate surfaces with a woodlike striated pattern,



available in either a lighter strata or darker sepia finish.

Innovative features include a pull-out, flip-down system desk drawer lined with non-slip material to keep a keyboard, mouse and rechargeable items in place. Desks also have a wire management ledge that provides a home for a power strip and easy-access front and back panels that conceal cords from wired devices. They also have a natural modesty panel.

TEXTILES

Morbern's Surf and Bayside are Made for Water, Sun and Fun

☞ Surf and Bayside are apt names for two new vinyls from Morbern designed to handle the challenges long exposure to sun and water bring. The durable, colorful, high-performance products work as well in contract and hospitality settings as they do in the marine applications for which they were designed.



Both Surf and Bayside use Morbern's Splash construction, a pink-stain resistant vinyl formulation, the gold standard in the marine industry. It provides UV protection, crack resistance and four-way stretch. A wide range of colors, tailorability and wear resistance make them a great choice for contract interiors as well.

Surf and Bayside can handle the weather with their mildew resistance, 1,000 hours of exposure under WeatherOmeter testing and a cold crack rating of -25 degrees Fahrenheit.

Bayside features a smooth, matte linen grain in 28 colors, including a wide range of neutrals plus rustic and earthy shades of reds, blues, yellows and greens.

The wavy lines in Surf's deeply grained surface mimic the flow of the sea. The matte finish keeps it feeling casual, as do the 23 colorways in a palette of neutrals plus earthy reds, greens, oranges and blues.

TABLES

Creoworks Launches Twig

☞ You can grab a cup of coffee and enjoy a productive moment anywhere with the Twig table designed and crafted by Creoworks.

The table was created as a tech company product. It's been used at Microsoft campuses and Seattle tech companies like Skykick.

Lightweight and sturdy, the table is fabricated from aluminum with a powder-coated finish available in five colors. It is made to pair with indoor or outdoor seating and is great for office spaces when a small table is needed for laptop work or as a phone table.

A new wood fabricated version of the table is scheduled to hit the market in late 2019.

Creoworks of Seattle is a studio of designers, architects and artisans that uses materials like reclaimed wood and steel, stone and acrylics to create products and designs. Amazon, Starbucks, University of Washington, Microsoft and Google are a few places that house Creoworks products and designs.

